



# **ACCESSIBLE** **SYSTEMS**

*Home Accessibility Provided, Installed  
and Serviced Locally*

No matter what  
type of home  
you live in....



# No matter what type of home you live in....



# Solutions Exist !!!







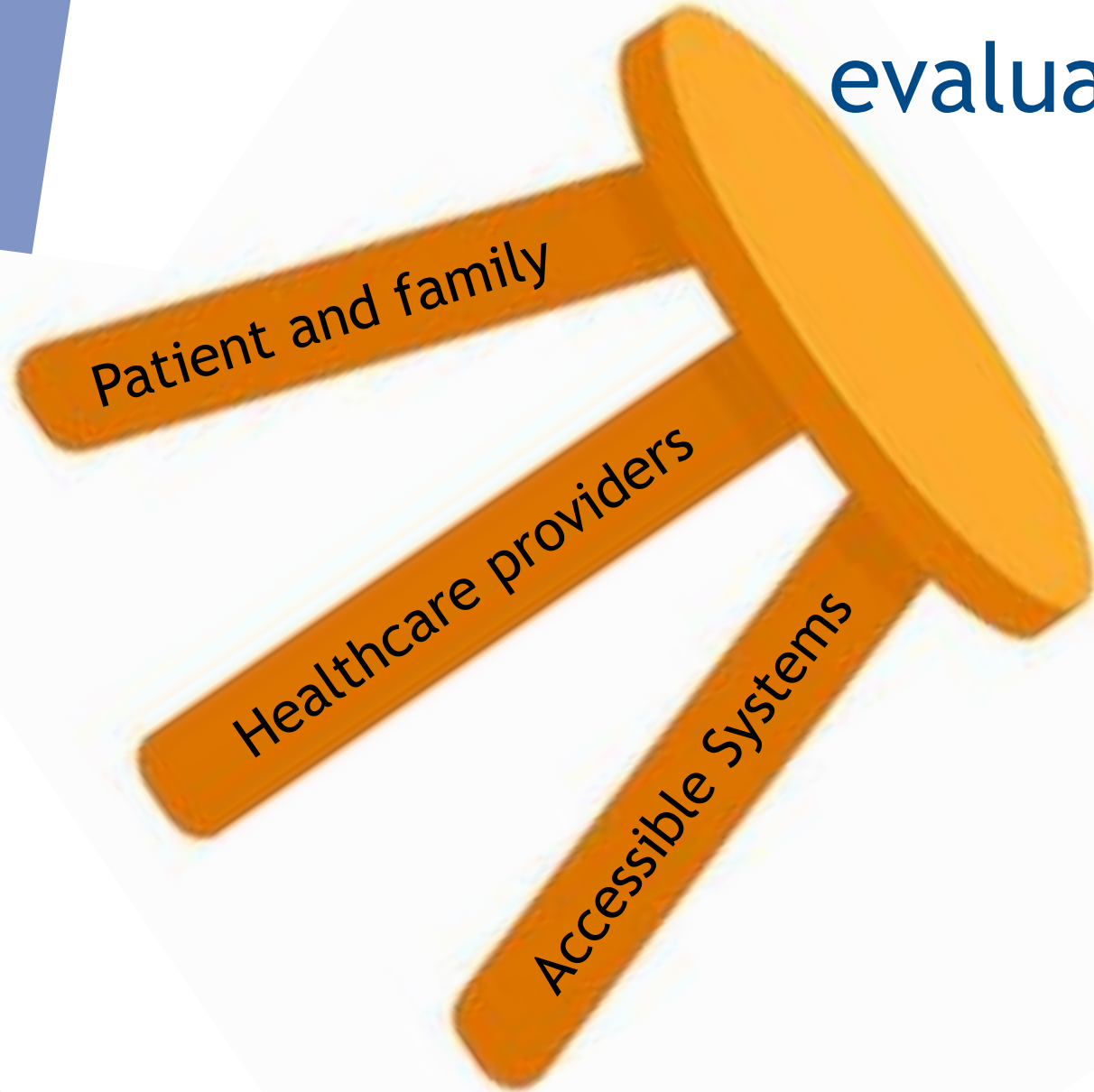
# ACCESSIBLE SYSTEMS

Individualized solutions

Increasing safety and accessibility

Remain at home as long as possible

# Performing a home evaluation together



# Complimentary Home Evaluations

*What our team is assessing...*

**Entrances &  
Exits**

**Levels & Stairs**

**Behavioral  
Health Needs**

**Bathrooms**

**Anywhere  
Transfers Take  
Place**

**New!**



# Equipment

- ▶ Ramps
  - ▶ Modular
  - ▶ Portable
  - ▶ Threshold
- ▶ Straight stair lifts (interior/exterior)
- ▶ Curved stair lifts (interior/exterior)
- ▶ Wheelchair lifts (VPLs)
- ▶ Lift & transfer systems
  - ▶ Sit-to-stand
  - ▶ Hoyer
  - ▶ Mobile lifts
  - ▶ Ceiling tracks
- ▶ ShowerBuddy

# Home Modifications

- ▶ Barrier-free bathrooms
- ▶ Grab bars
- ▶ PT rails
- ▶ Widened doorways
- ▶ Remodeling of previous modifications
- ▶ Roll-under vanities
- ▶ Superpoles
- ▶ Raised and elongated toilets
- ▶ Concrete ramps (exterior)

# Most Common Questions

How soon can you see my house?

How much will equipment cost?

How do I pay for this? Will Medicare help?

Where do I begin?

# Most Common Questions

**How soon can you see my house?**

*Usually within 2-3 days*

**How much will equipment cost?**

*It varies depending on recommendations*

**How do I pay for this? Will Medicare help?**

*Medicare covers a very small amount of DME (durable medical equipment). There are grant programs through the VA, Medicaid, and non-profits that may help. 70% of our clients pay out of pocket for equipment and modifications.*


# Funding Resources

- **Assistive Technology Partners**
- **Medicaid & VA**
- **City & National Grant Programs**
- **Non-Profits and Foundations**
- **Long Term Care Insurance**
- **Vocational Rehab**
- **Worker's Compensation**
- **Home Builders Foundation (major Metro areas)**
  
- *Sales tax waived with receipt of RX*

[www.accessiblemed.com](http://www.accessiblemed.com)



▶ **Where do I begin?**



Every client's path will look different. Some start with and make do with grab bars and handrails.

Others outfit their home with ramps, lifts, and modified bathrooms.

“Ideal”

“Make do”

# Complimentary Home Evaluations

*What our team is assessing...*

**Entrances &  
Exits**

**Levels & Stairs**

**Bathrooms**

**Anywhere  
Transfers Take  
Place**

# Barriers vs. Solutions

**Entrances & Exits**

**Levels & Stairs**

**Bathrooms**

**Anywhere  
Transfers Take  
Place**

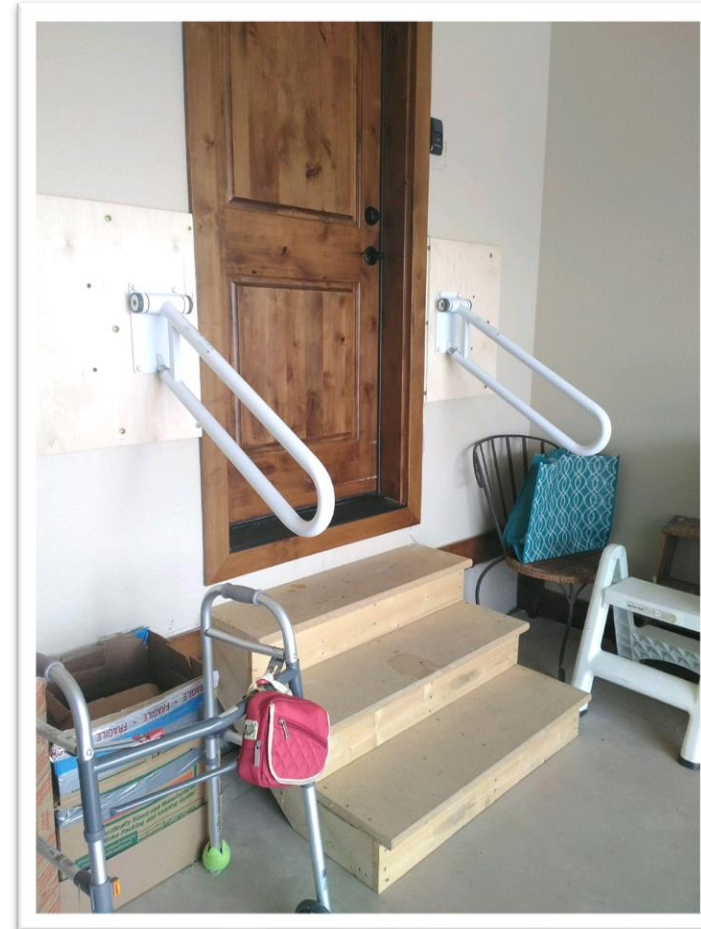
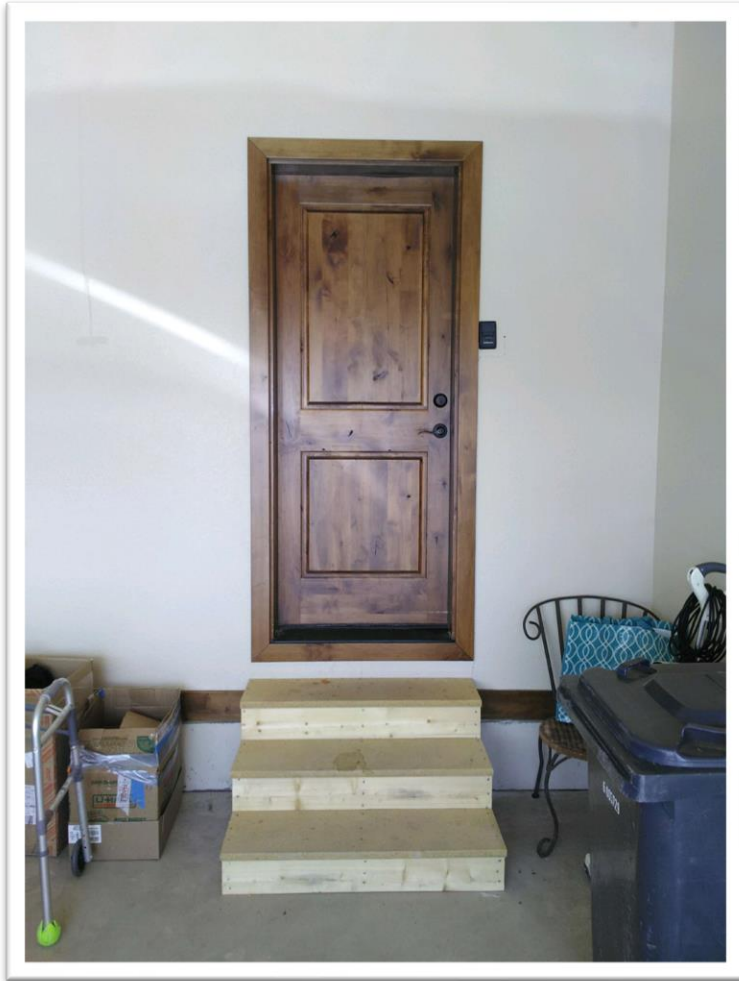


## Entry Barrier:

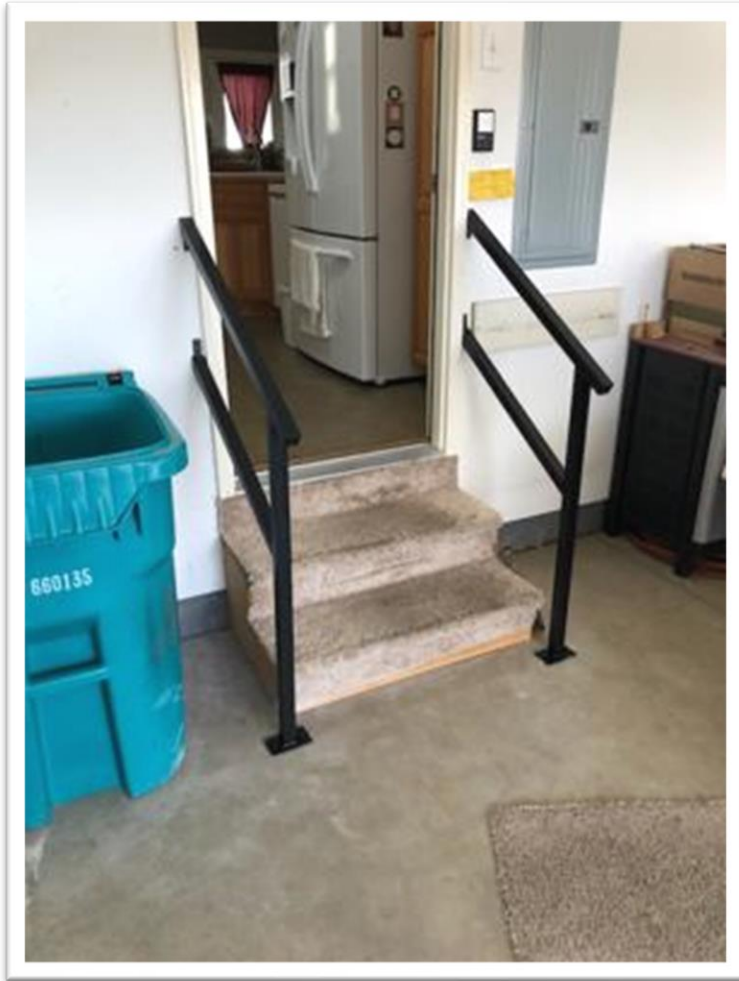
Garage steps,  
no railings or  
grab bars



# Entry Solution: Angled PT Rails

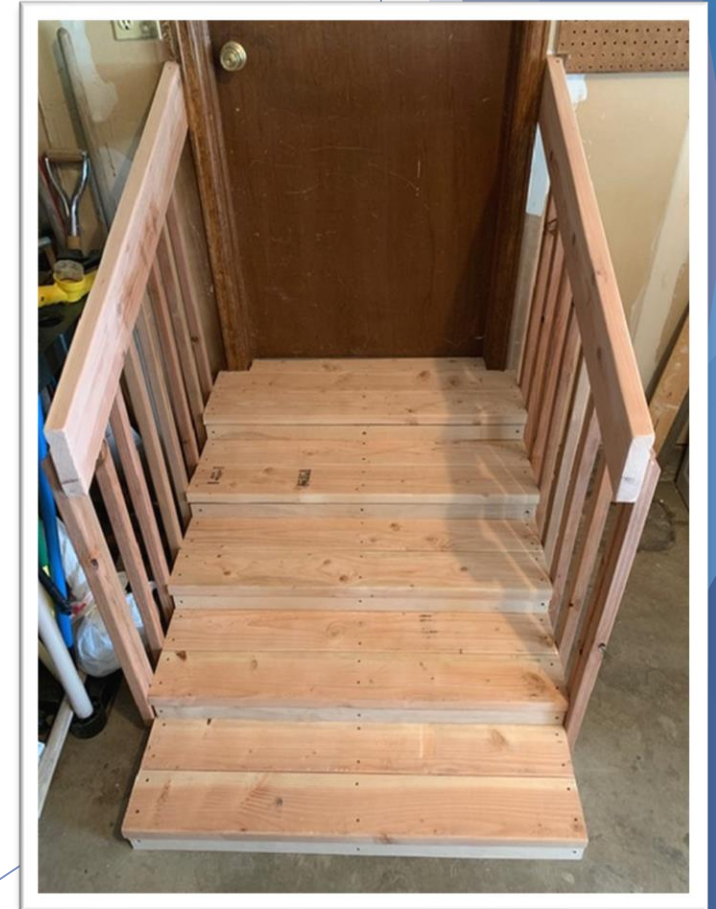
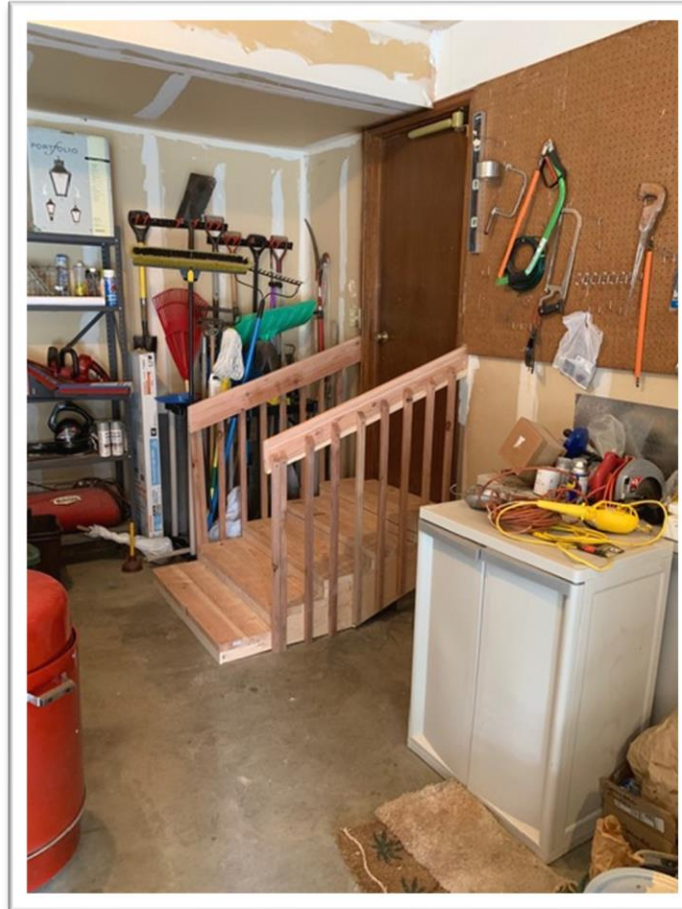


# Entry Solution: Custom Steel Railings



# Entry Solution: Build Easy Steps

Shorter steps, deeper tread





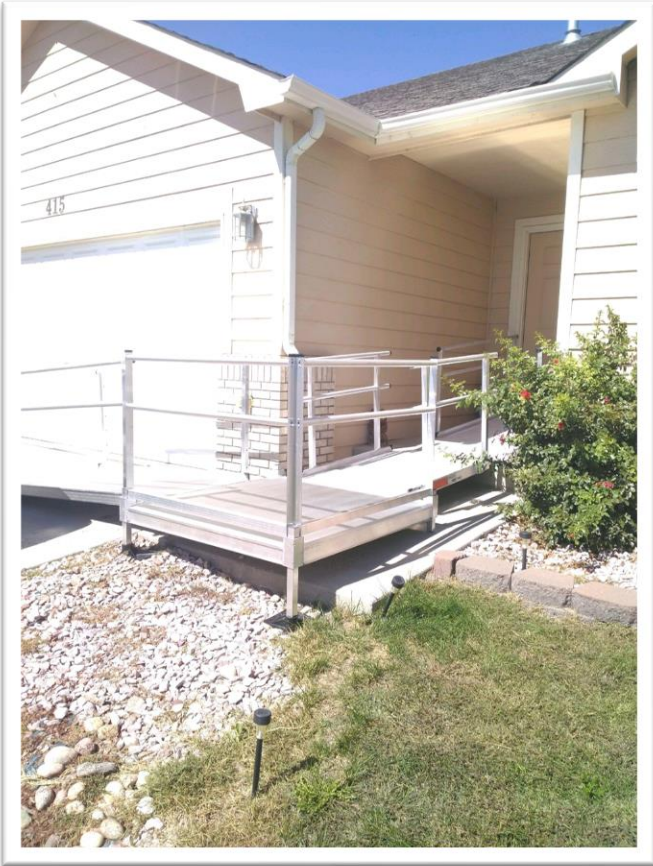
## Entry Solution:

### Modular Ramp

- ▶ Easy, quick install
- ▶ Non-permanent
- ▶ Ramp often in-stock

# Front Entrance

# Rear Entrance





**BEFORE**



**BEFORE**



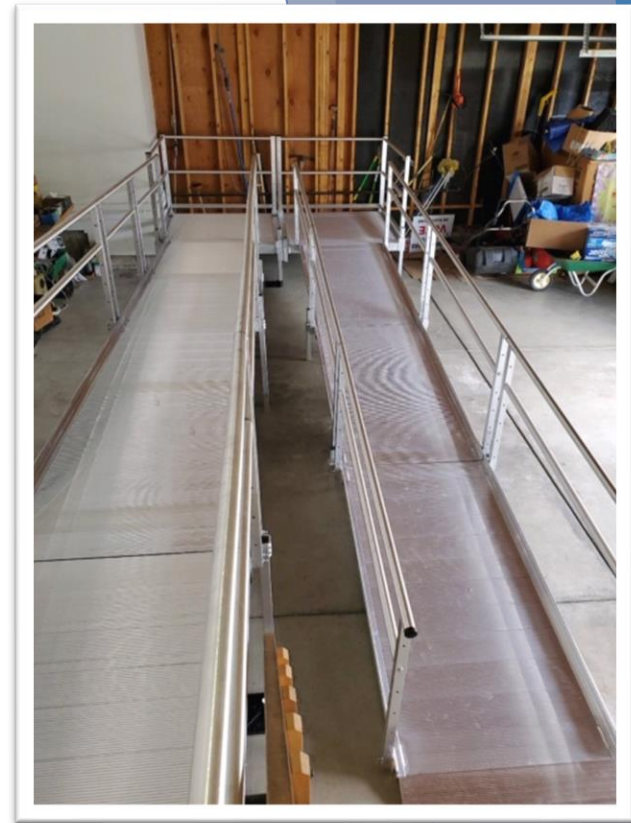
**AFTER**

What about more than 4 steps...to avoid a large ramp system like this.

Average Step =  
7 inches of rise

4 steps =  
28 inches of rise

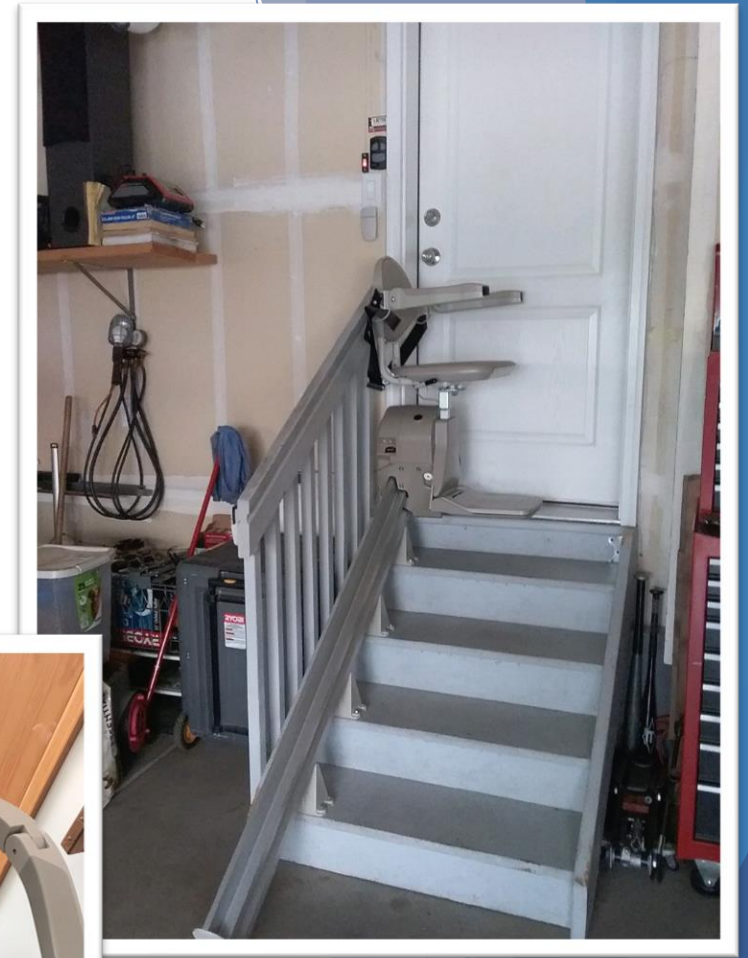
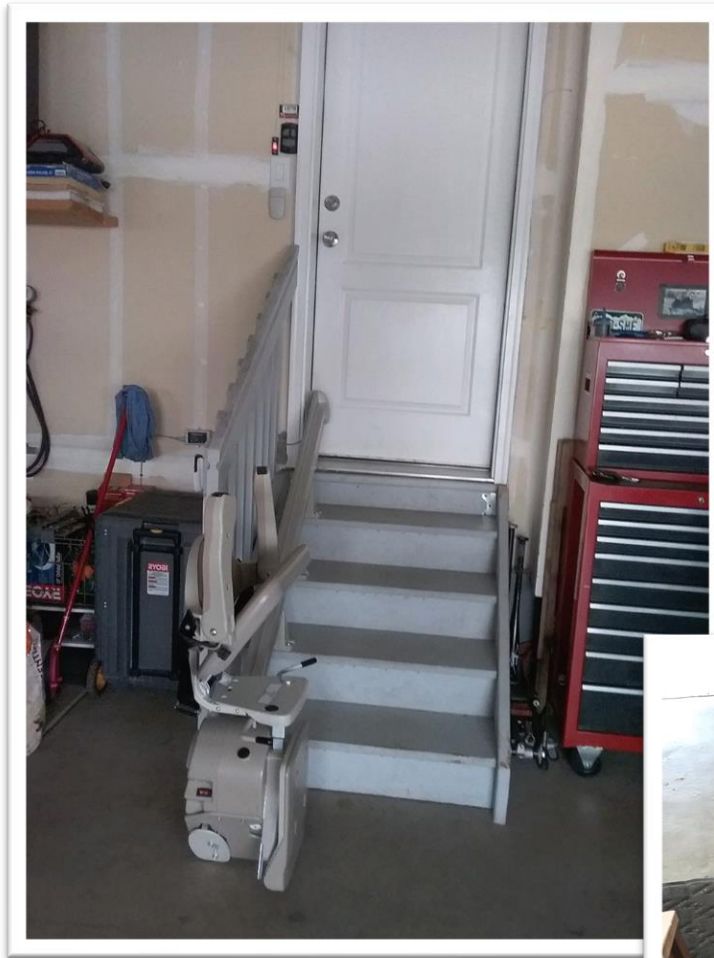
28 inches of rise =  
28 feet of ramp  
PLUS platforms for  
turns





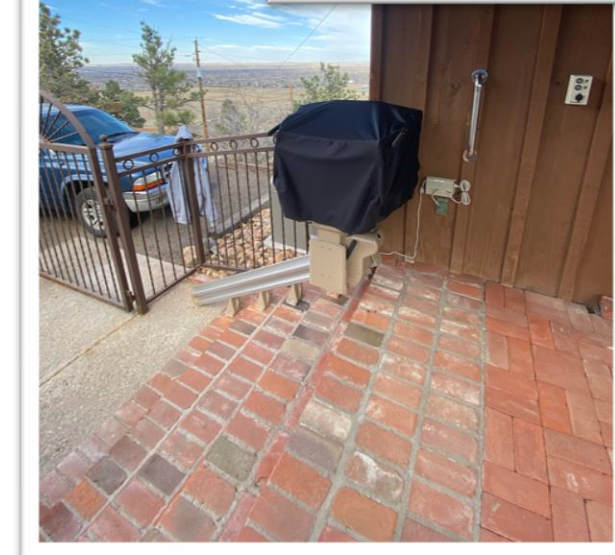
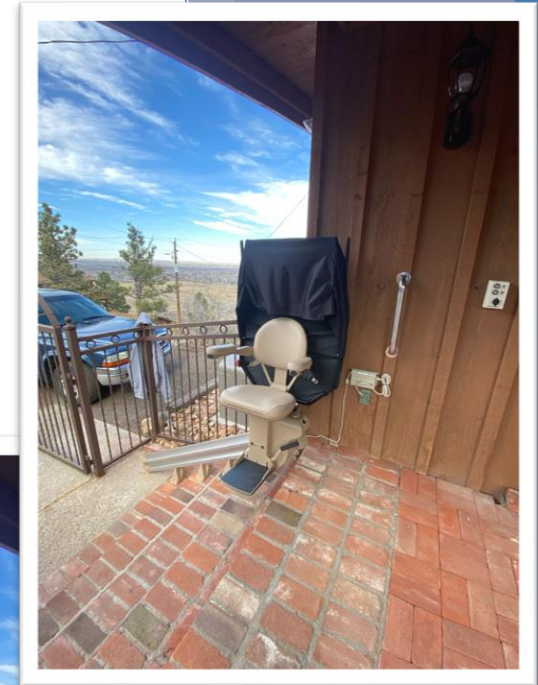
# Entry Solution:

Stair Lift  
installed on  
garage stairs



# Entry Solution:

Stair lifts can also be installed outdoors (they come with a cover)



# Entry Solution:

## Wheelchair Lift (Vertical Platform Lift)



# Wheelchair Lift (Vertical Platform Lift)

A platform can  
also be built  
for ease of  
transition



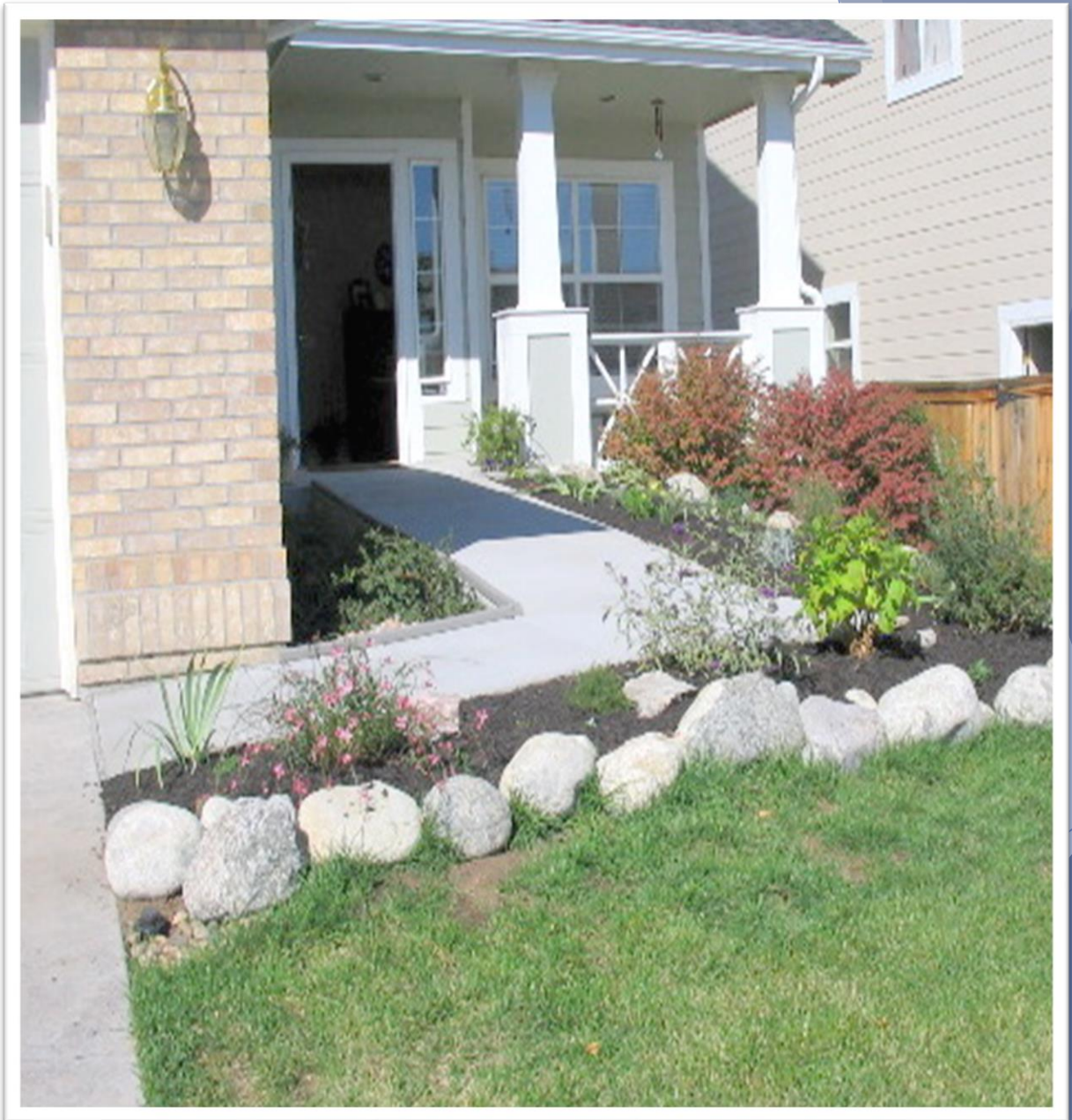
## Entry Barrier:

Narrow  
walkway,  
multiple steps,  
threshold



## Entry Solution:

Custom  
concrete ramp  
(widened,  
directly up to  
threshold, curb  
appeal)



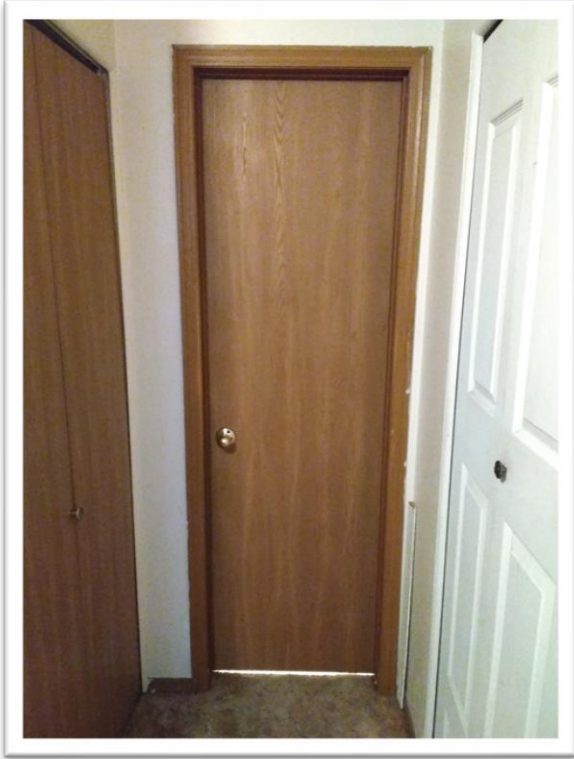
# Door Widening

## - Swing Clear/Off Set Hinges

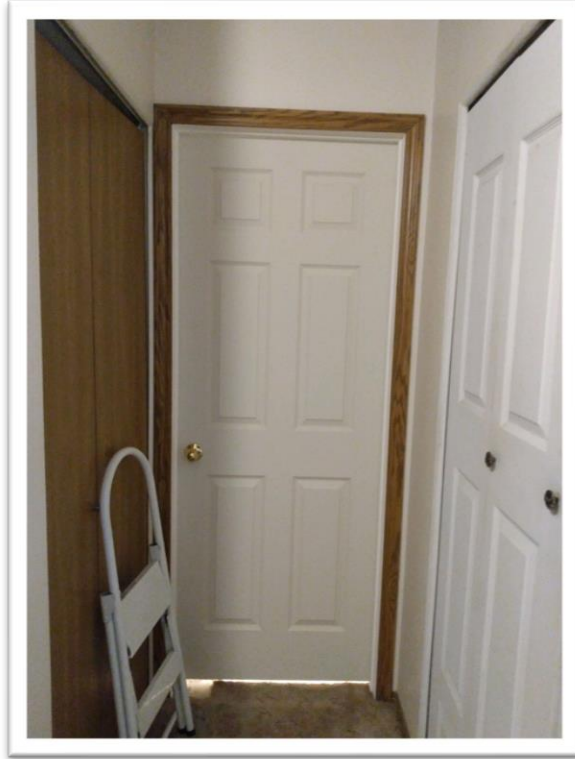
Allows the door to swing open and be flush with the door jam, adding 1.5 to 2 inches to the width of the door opening



# Solution: Door Widening



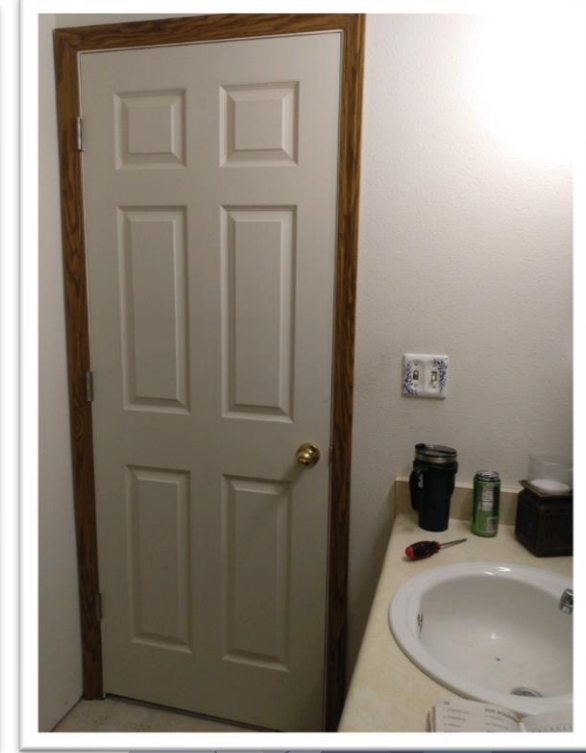
Before from hallway



After from hallway



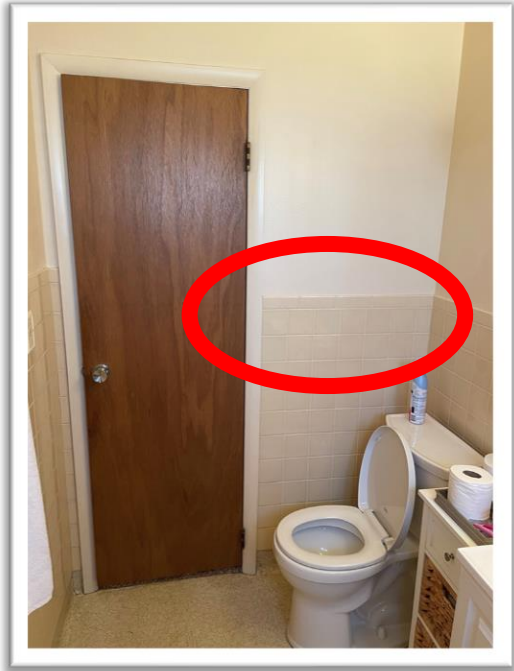
Before from bathroom



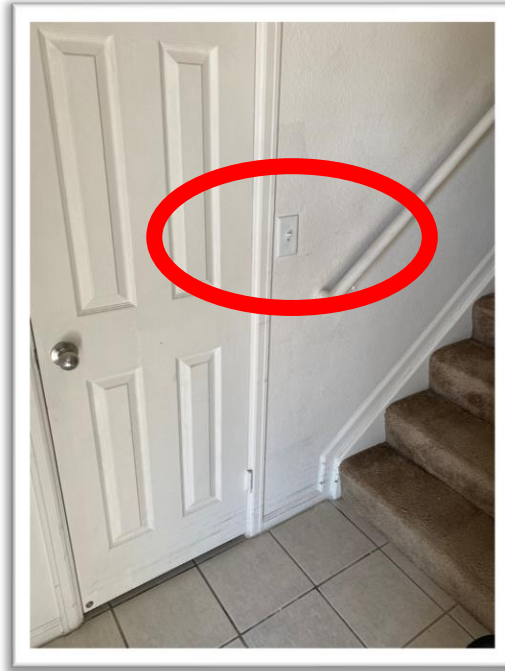
After from bathroom



## To Keep In Mind with Door Widening...



Will other parts of the bathroom walls need to be modified?  
Example: Tile wall material

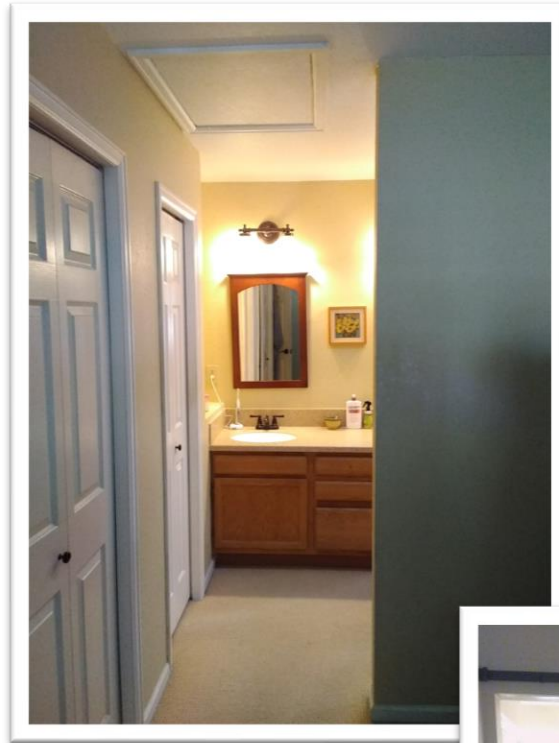


Is there a light switch or outlet that will need to be relocated?

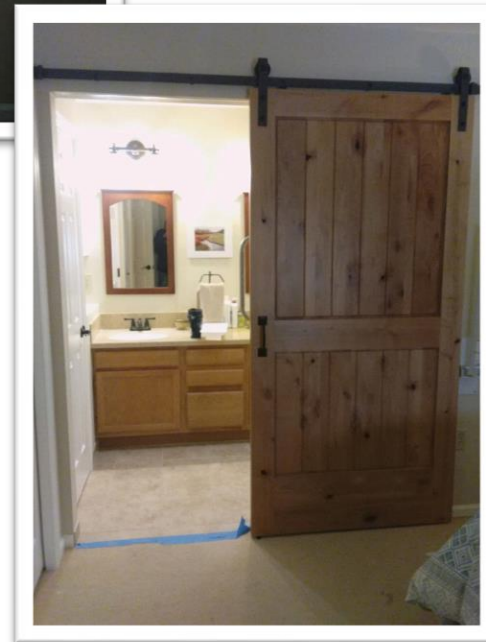


When a door is widened, new flooring will be needed (or patched in)

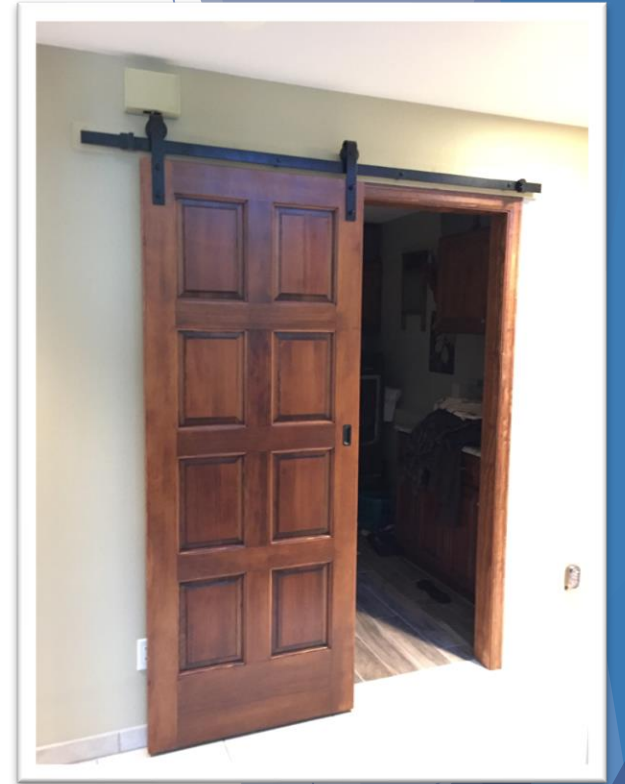
# Solution: Barn Doors



Before: Wide open to bathroom, reduced privacy

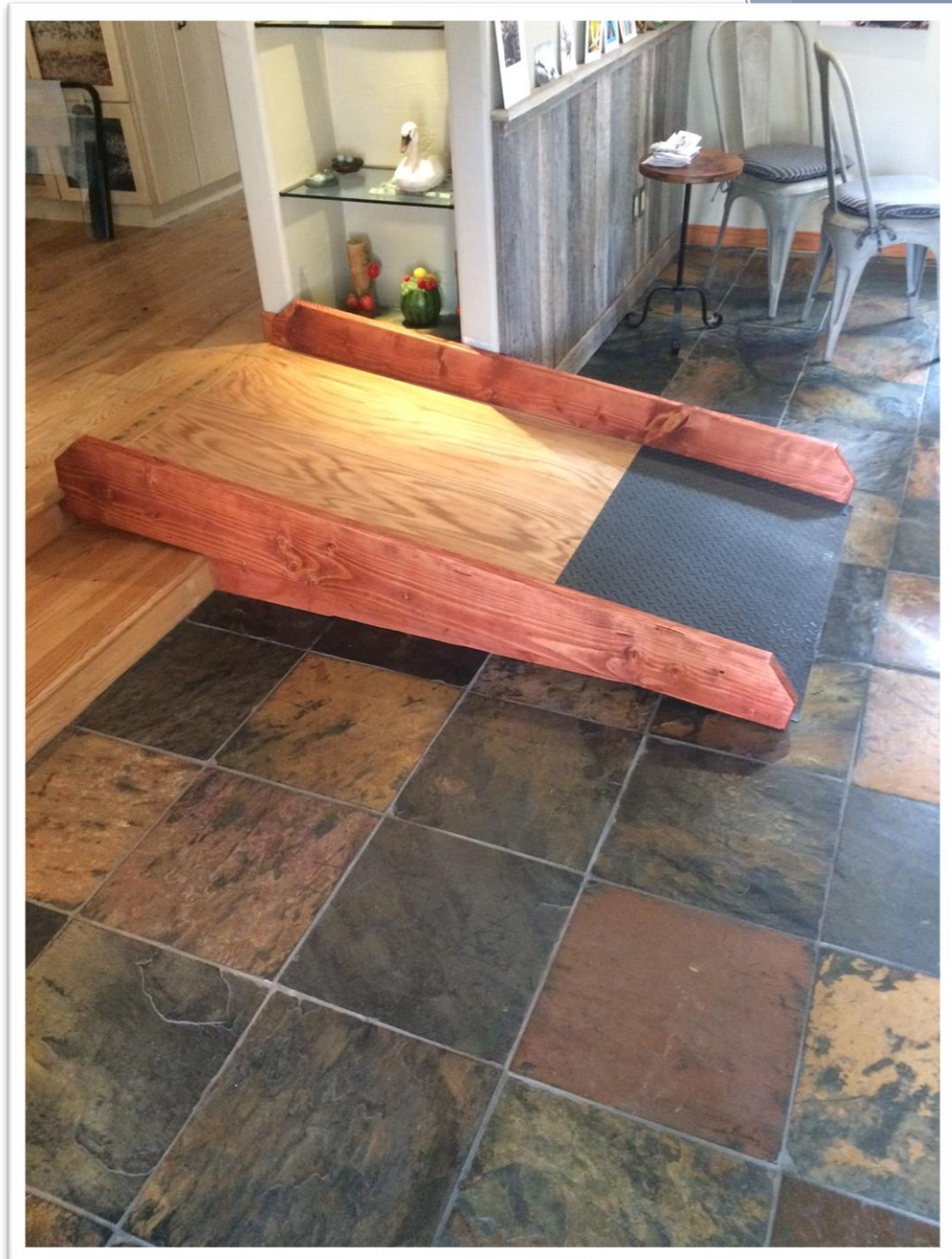


After: Header/ceiling added in, barn door installed for privacy



## Interior Solution:

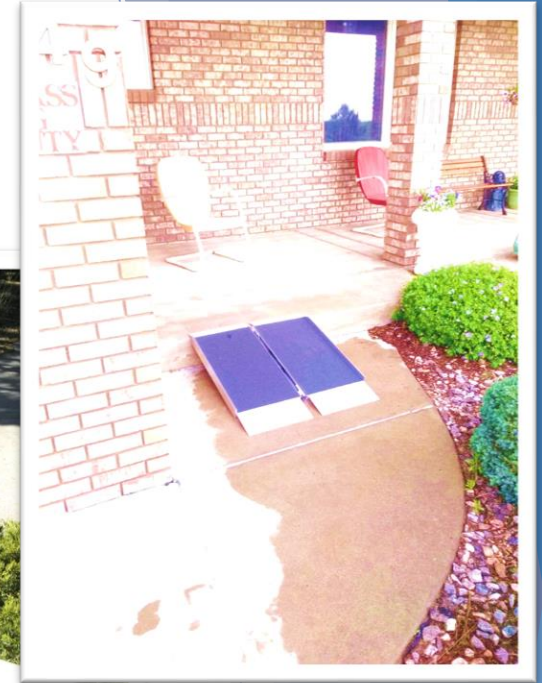
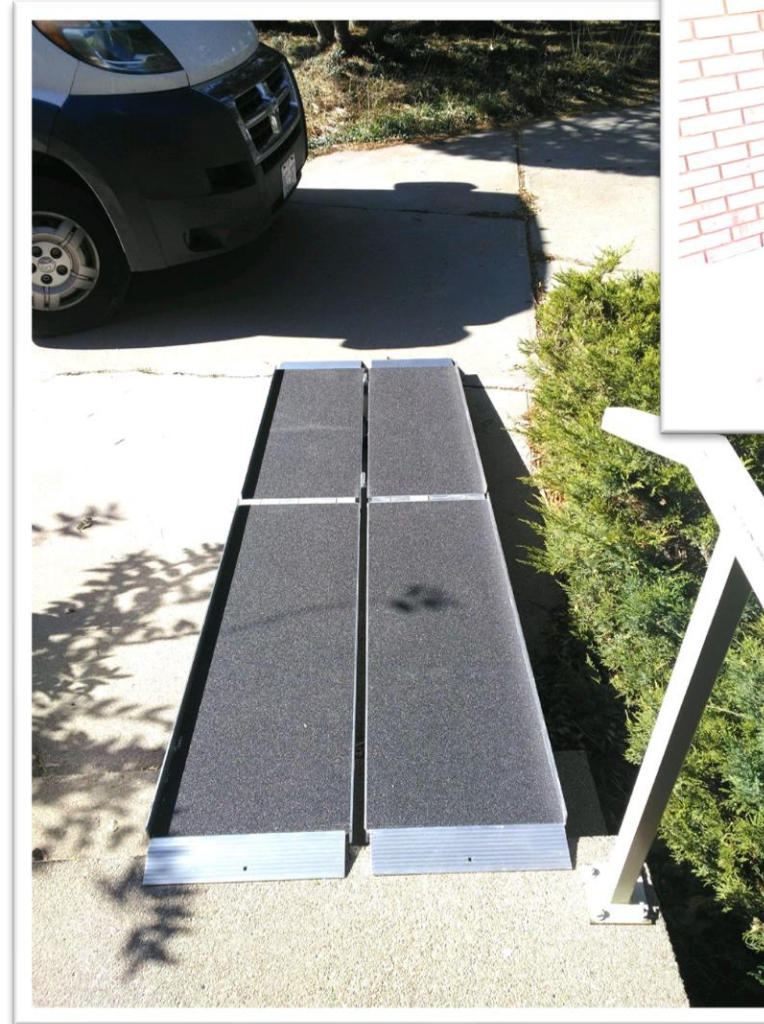
Custom  
wooden ramp  
built to exact  
home/user  
specifications



# Exterior Solution:

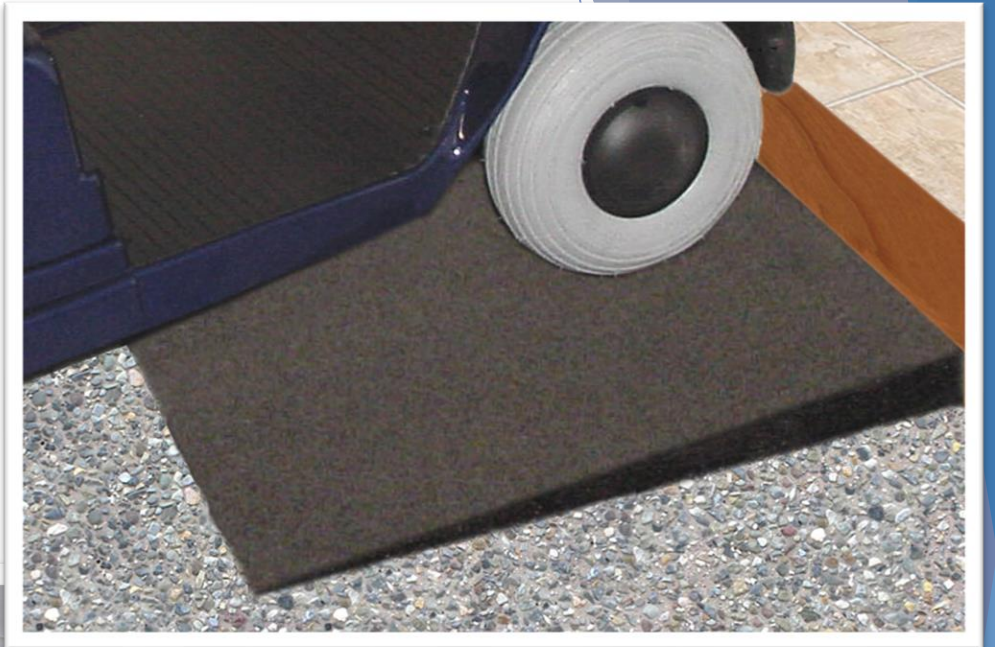
## Portable Ramps

- Variety of lengths
- Keep ramps in stock for quick delivery
- Great solution for patients who travel; accessing other homes



## Interior Solution:

Threshold  
ramps to  
overcome  
small changes  
in height



# Barriers vs. Solutions

**Entrances &  
Exits**

**Levels & Stairs**

**Bathrooms**

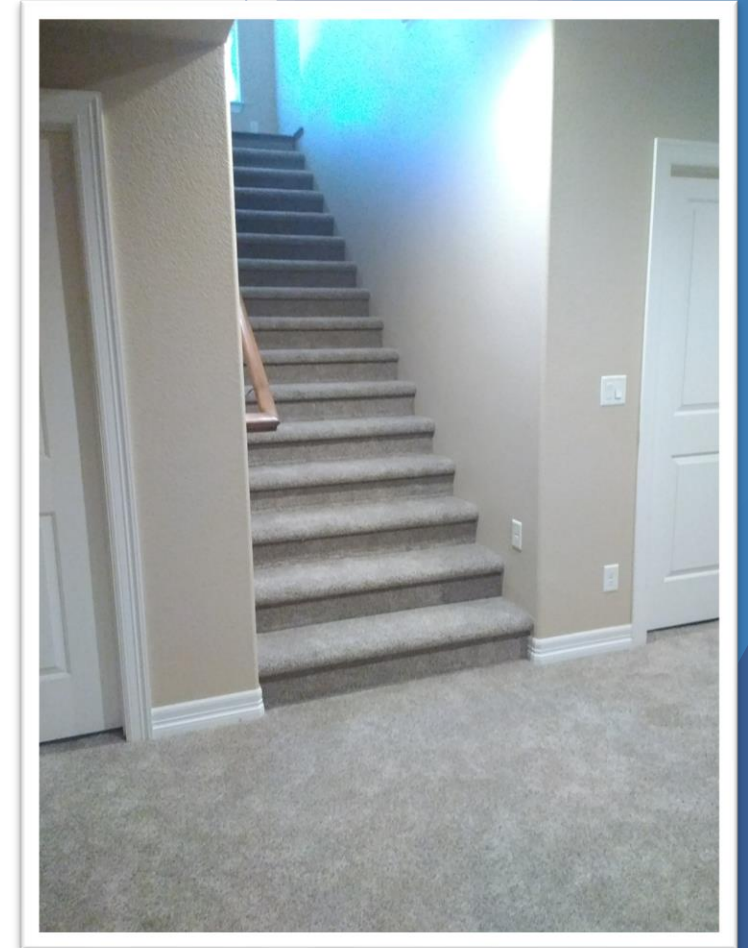
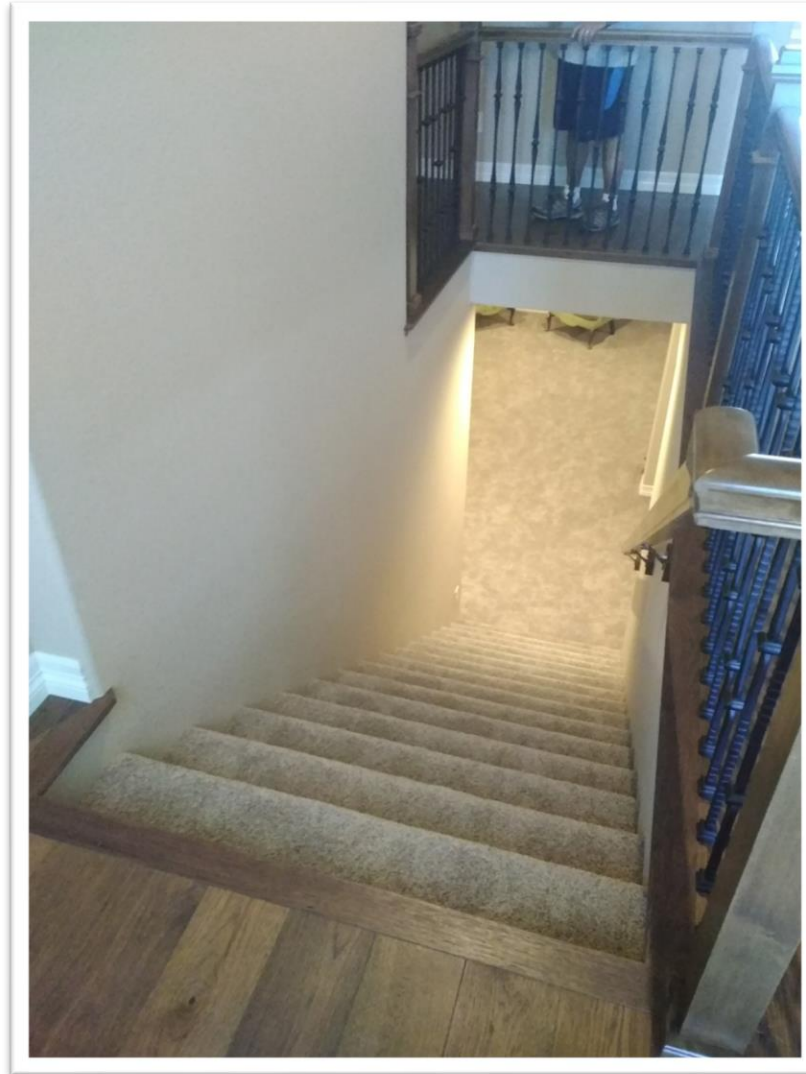
**Anywhere  
Transfers Take  
Place**

## Barrier:

Narrow, steep steps

Lacking railing on  
both sides

Unable to join  
family in basement  
rec room



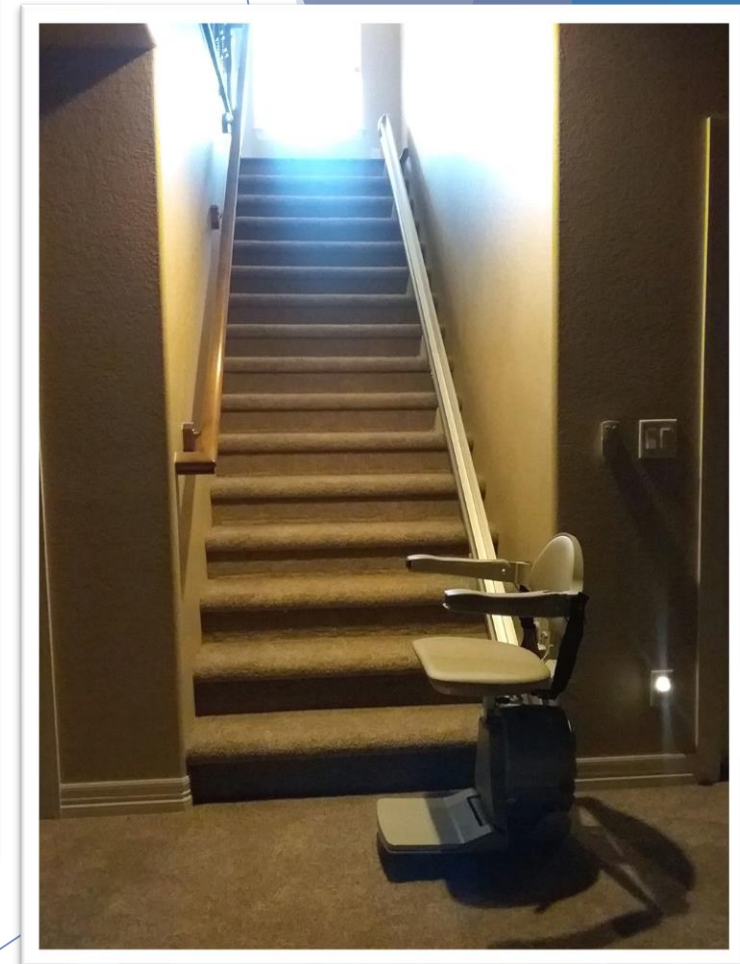
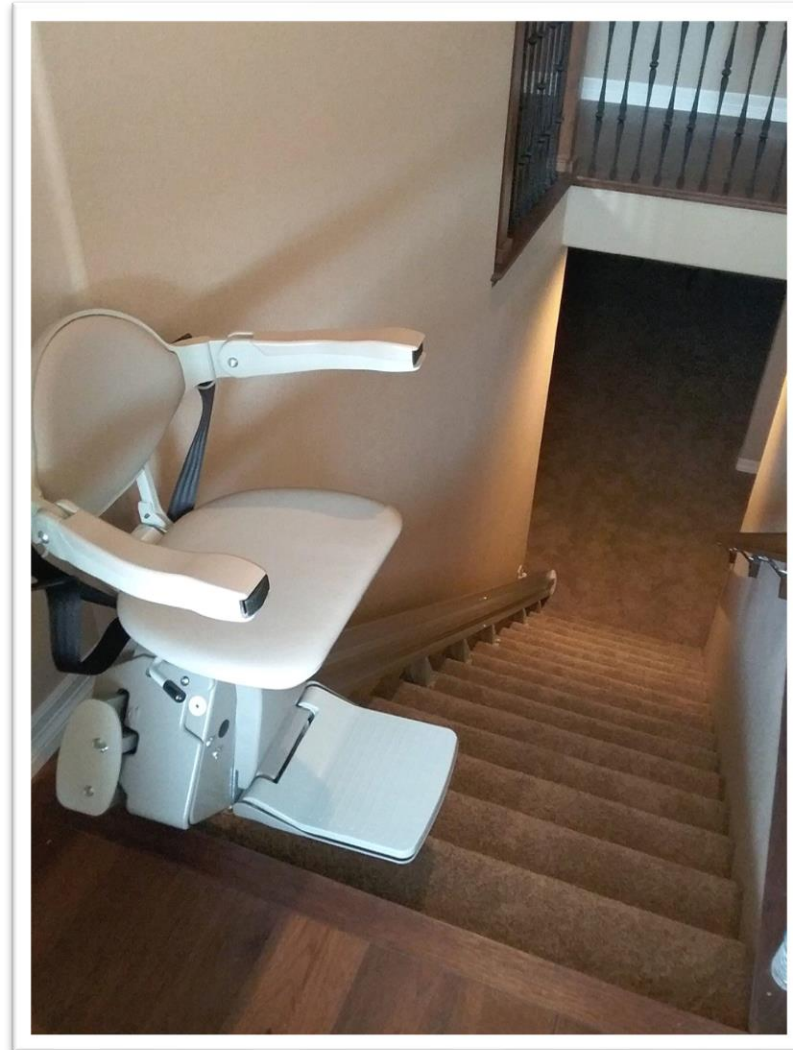
## Solution:

### Installation of Bruno Straight Stair Lift

Installed close to  
the wall so family  
can get around  
chair (also folds up)

Client has access to  
basement and  
family gatherings

Increased FREEDOM  
& SAFETY

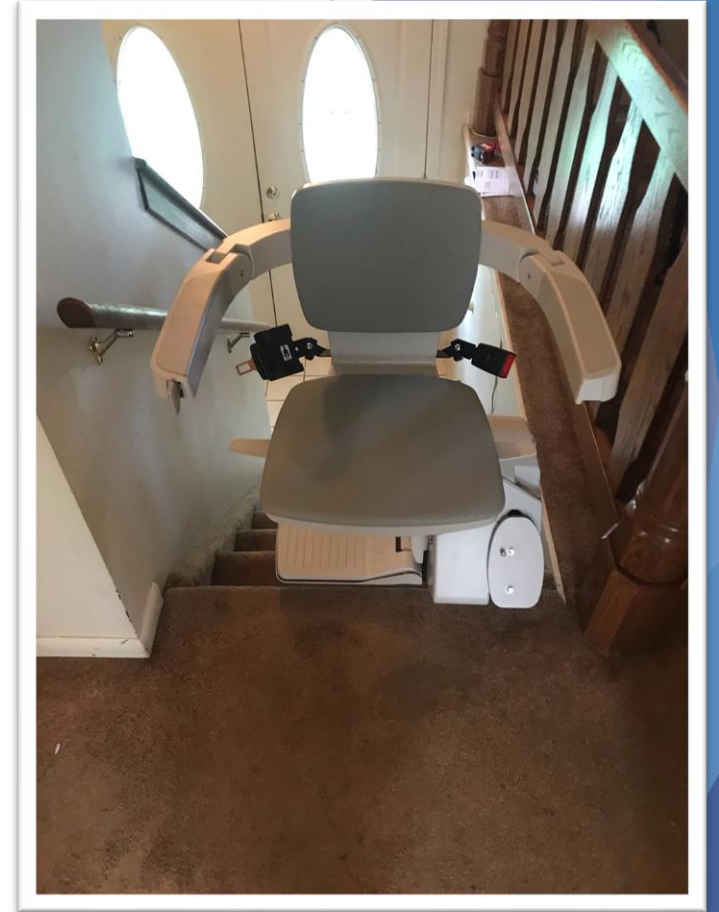
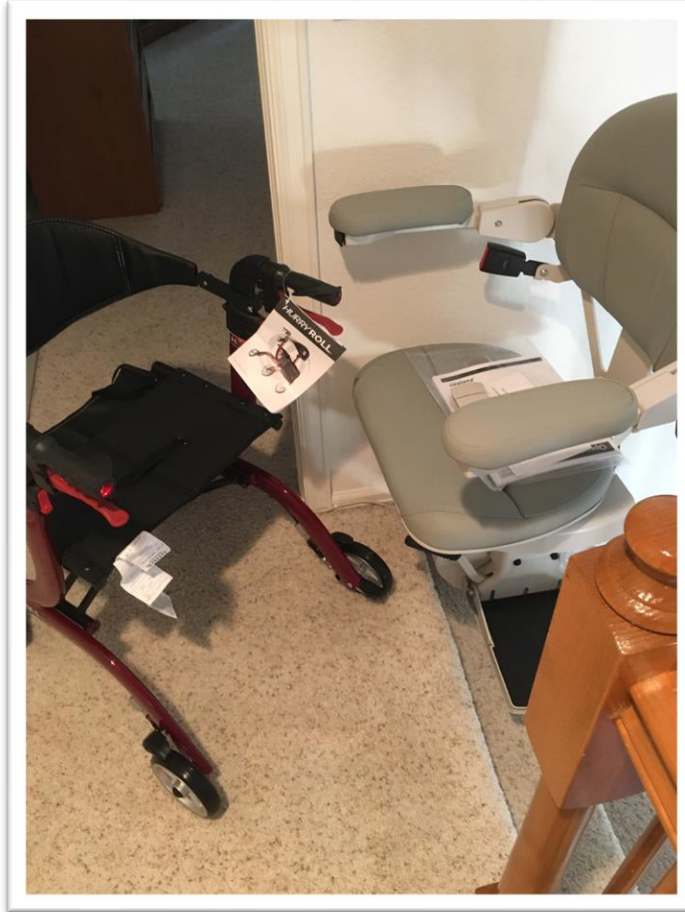




## Easy & Safe Transfer:

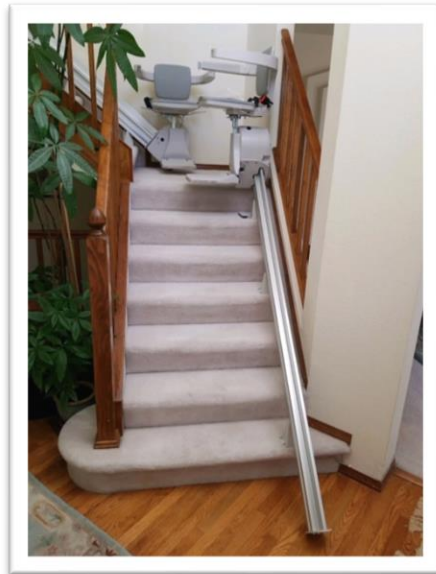
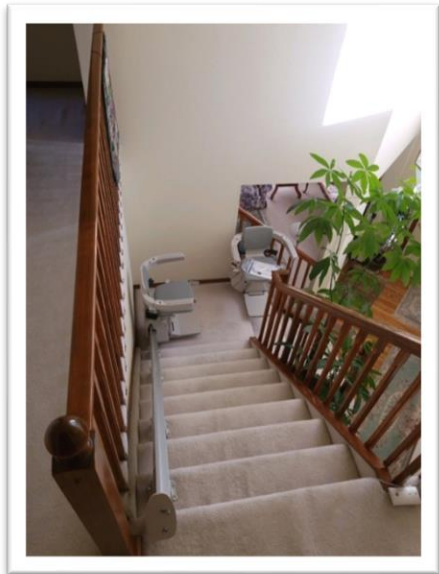
Seat swivels 90 degrees at top of stairs for safe transfers

- Locks in place to stay steady
- Manual or power options



## Solution:

**Curved Stair Lift**  
(anchors into steps,  
works around  
landings, curves.  
No need to transfer  
at landing)



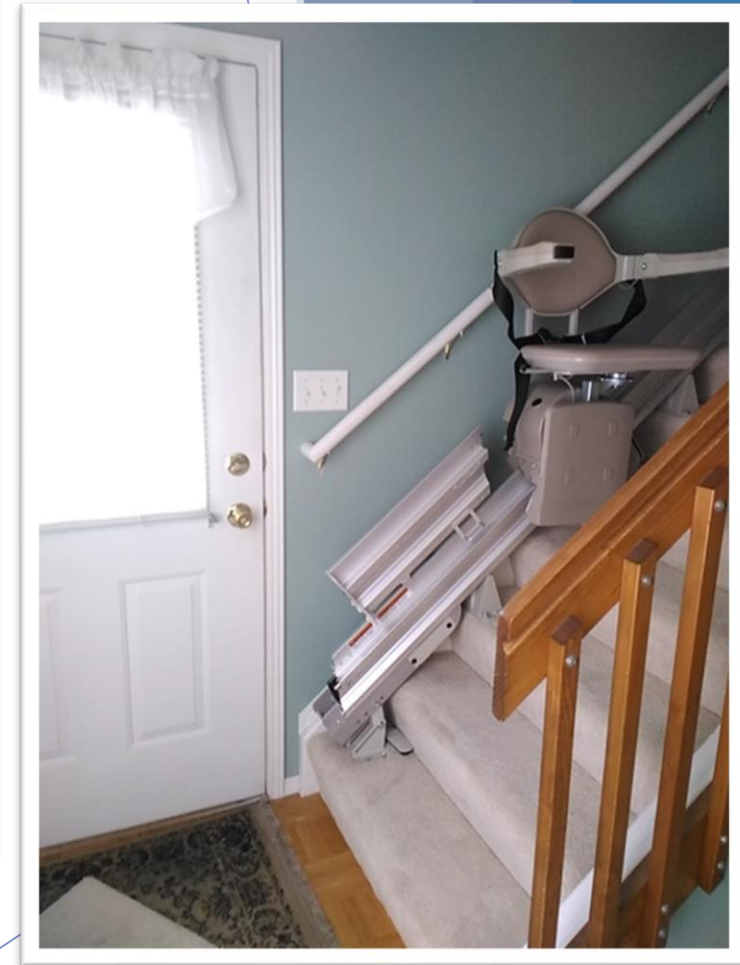




# What about hallways or doorways?

Folding rails (power or manual) bring the chair up the stairs and fold the rail out of the way

Always allow for 32 inches of clearance around a chair

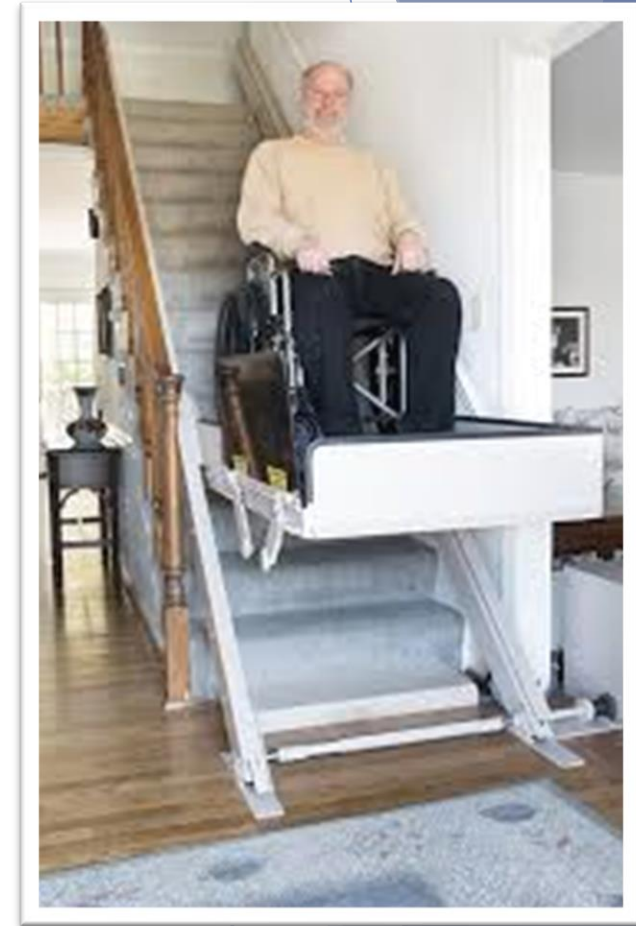
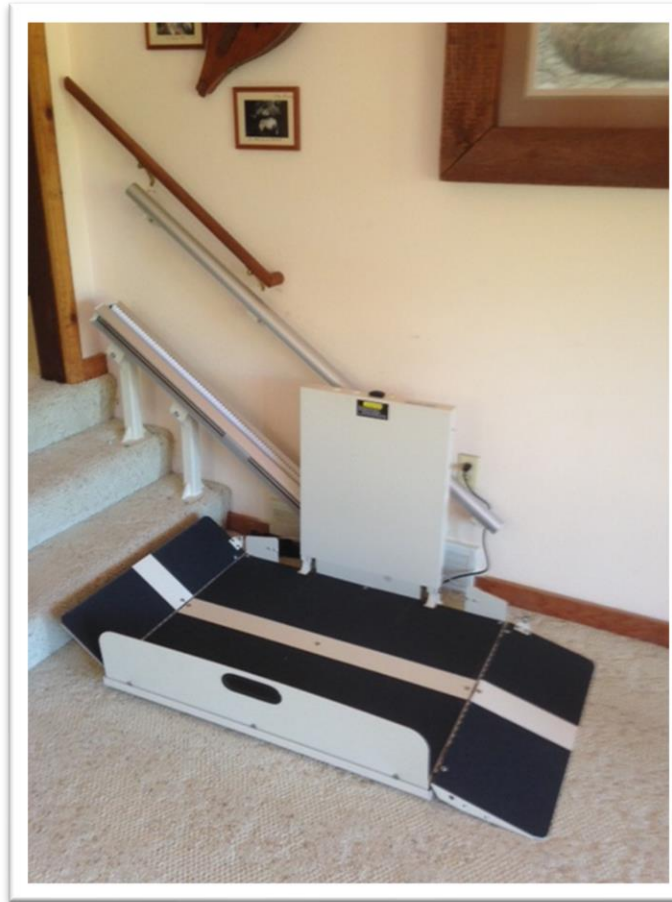


## Solution:

# Inclined Platform Lift

Combination between VPL  
and stair lift

Ideal solution for  
wheelchair and power  
chair users when vertical  
platform lift is not an  
option



# Barriers vs. Solutions

**Entrances &  
Exits**

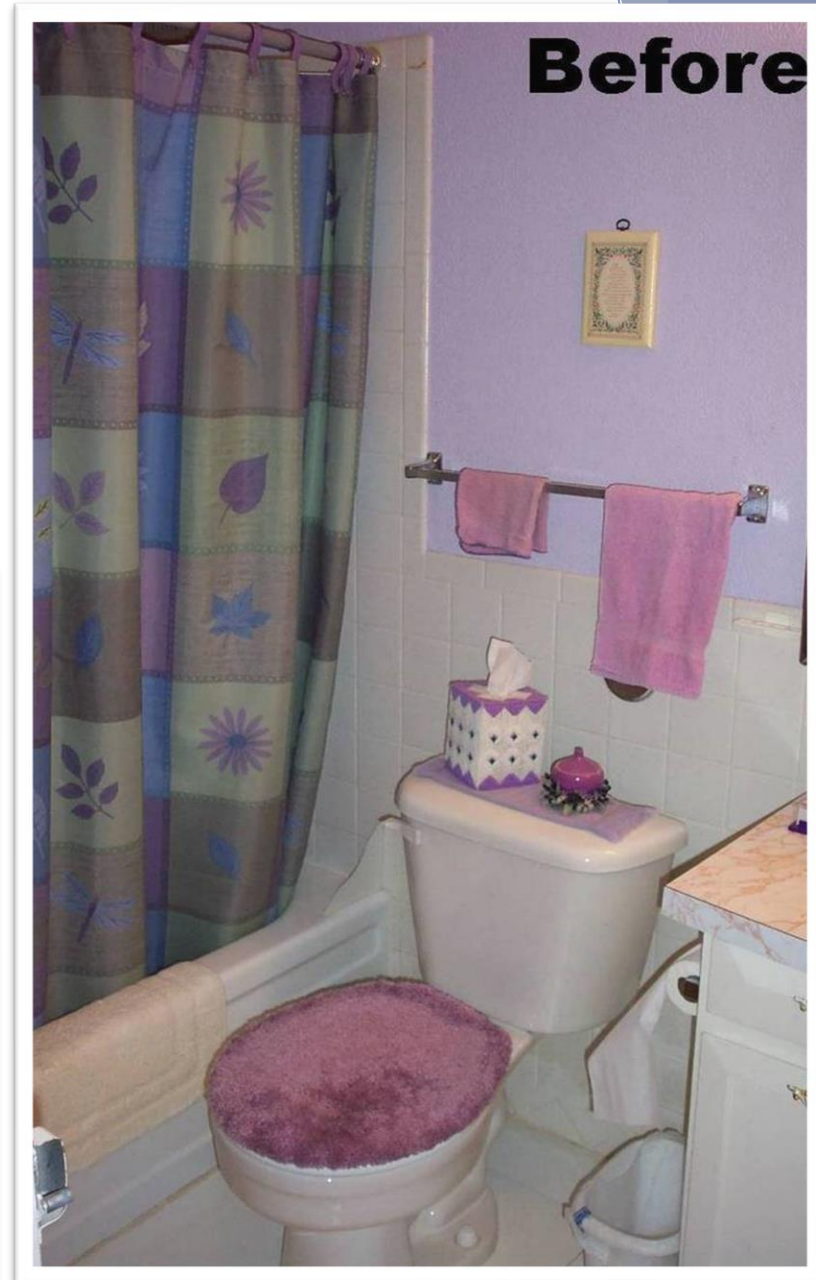
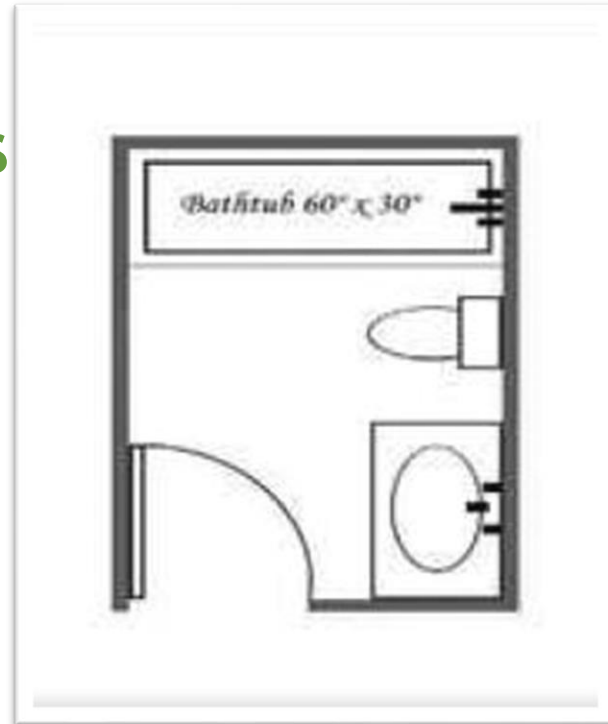
**Levels & Stairs**

**Bathrooms**

**Anywhere  
Transfers Take  
Place**

## Barriers:

- Low toilet
- High tub wall
- Narrow bathroom
- No grab bars





## Solution:

- Barrier-Free Shower
- Raised Toilet Seat
- Grab Bars at Appropriate Levels
- Handheld Shower Head
- Room for Transfers



# PT Rails, Super Pole, Bathtub Safety Rails, and Toilevator





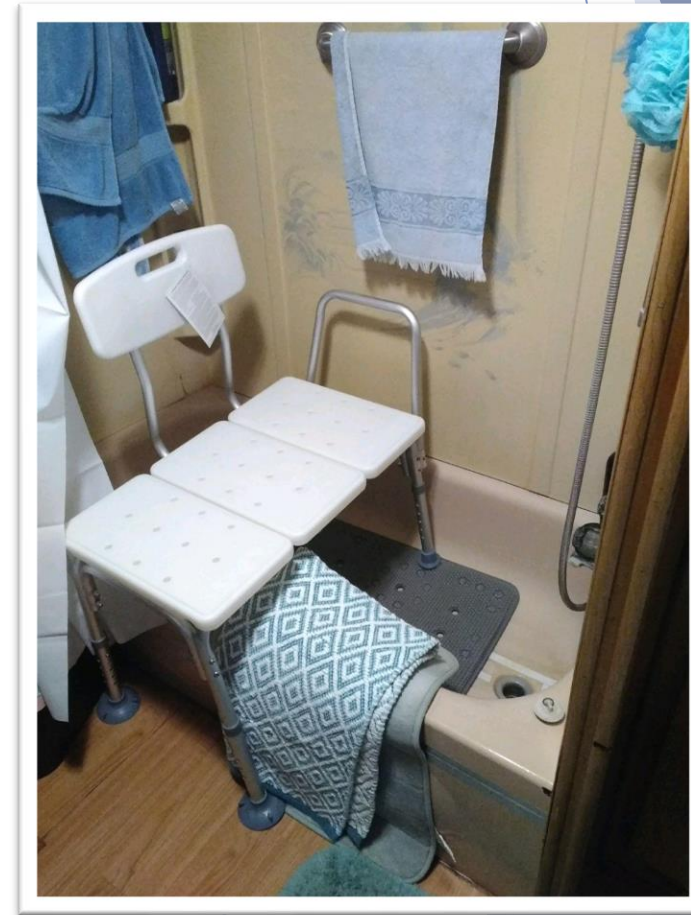
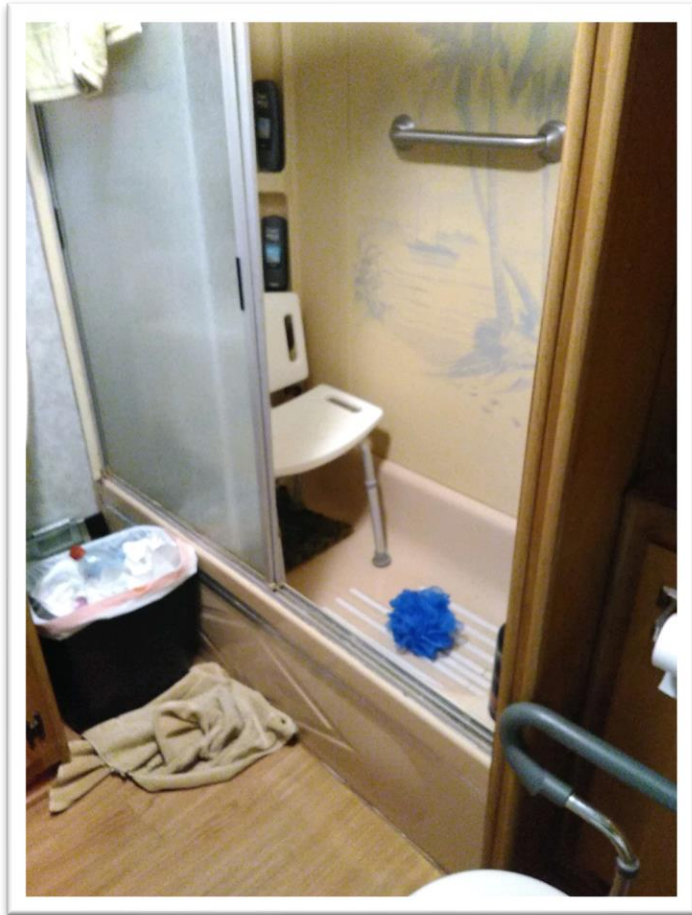
**BEFORE**



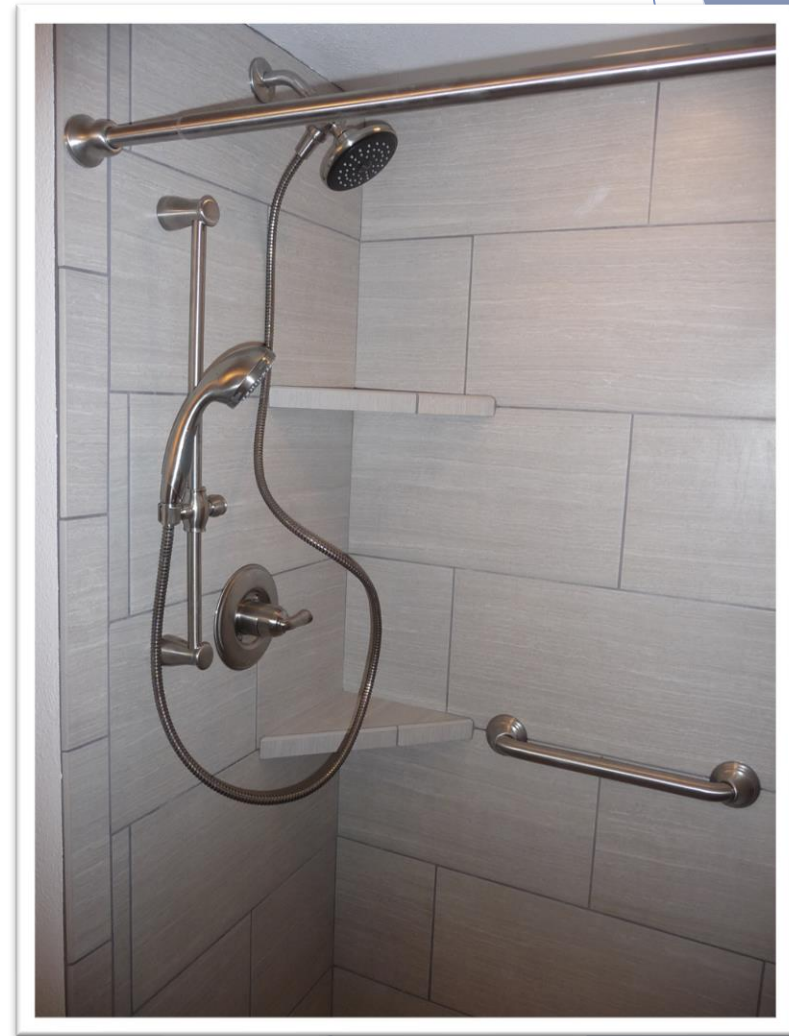
**AFTER**

# Simple Solution to Avoid Full Renovation:

Remove sliding glass, clean up caulking, install curtain rod, find appropriate chair

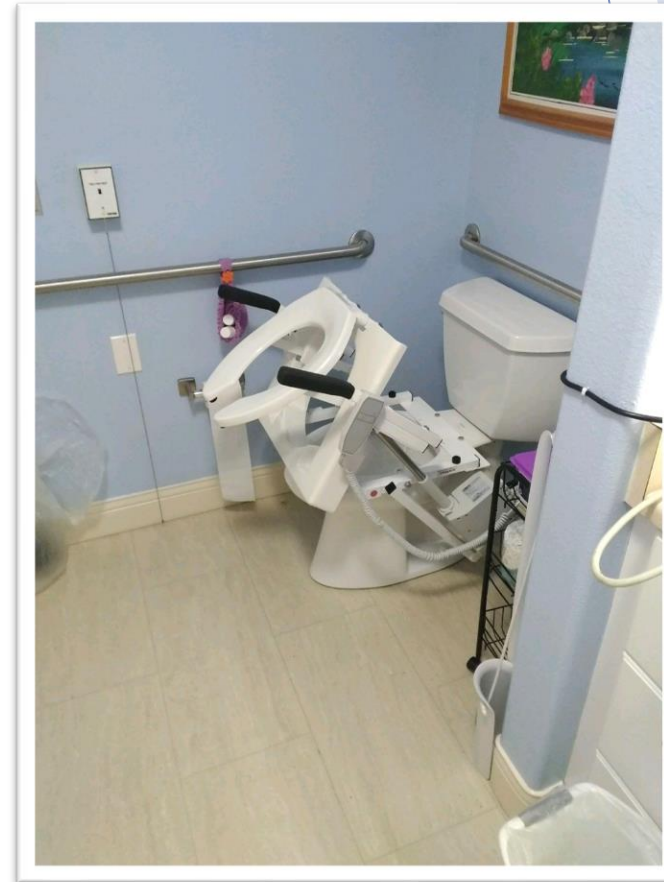
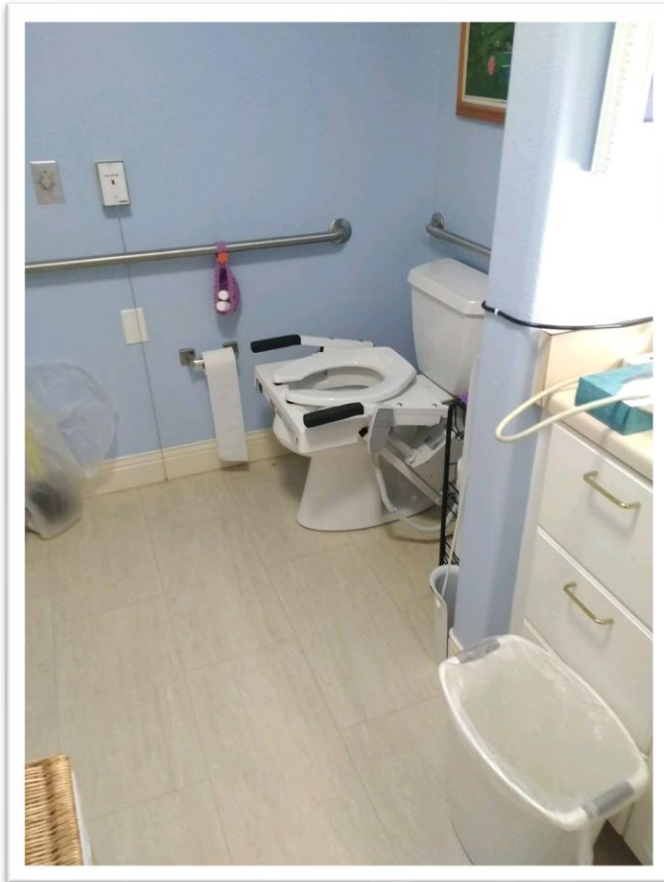






# Simple Solution to Avoid Toilet Replacement:

Install toilet incline lift



# Simple Solution to Avoid Full Renovation:

## Bellavita Bath Lift



**Weight Capacity:  
300 lbs**



bellavita

**Side flaps fold down; flat  
surface for transfers**



**Reclines to 50 degrees**



# Barriers vs. Solutions

**Entrances &  
Exits**

**Levels & Stairs**

**Bathrooms**

**Anywhere Transfers  
Take Place**

## Barriers:

- Narrow doorway
- No room to transfer to toilet
- High tub lip



## Solution:

*Ceiling transfer systems* allow room-to-room movement. Limit number of transfers, increase safety in shower

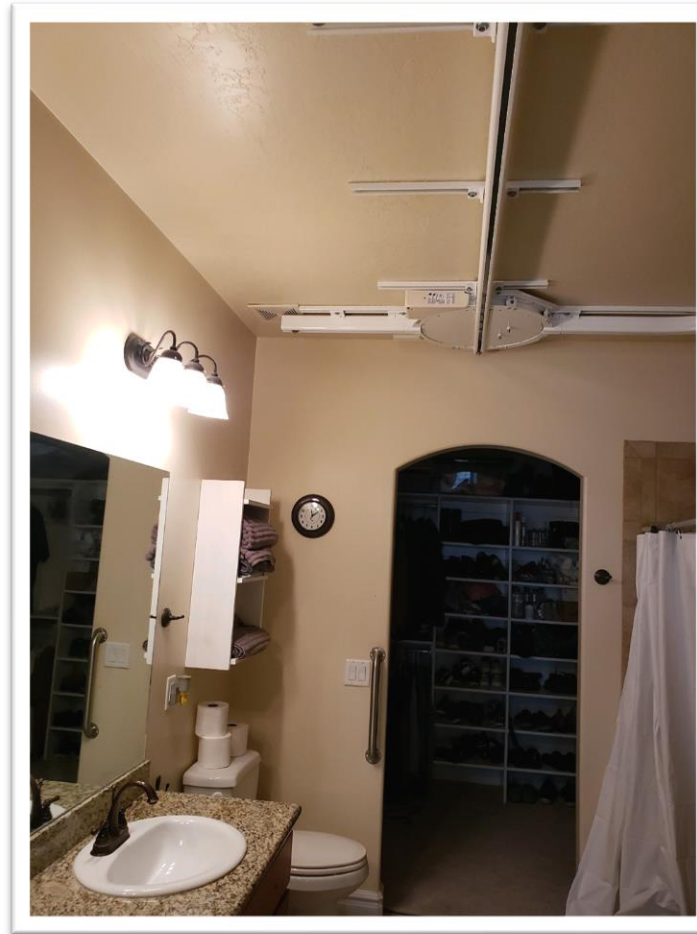
*Note: User can move from room to room as track goes through doorway*



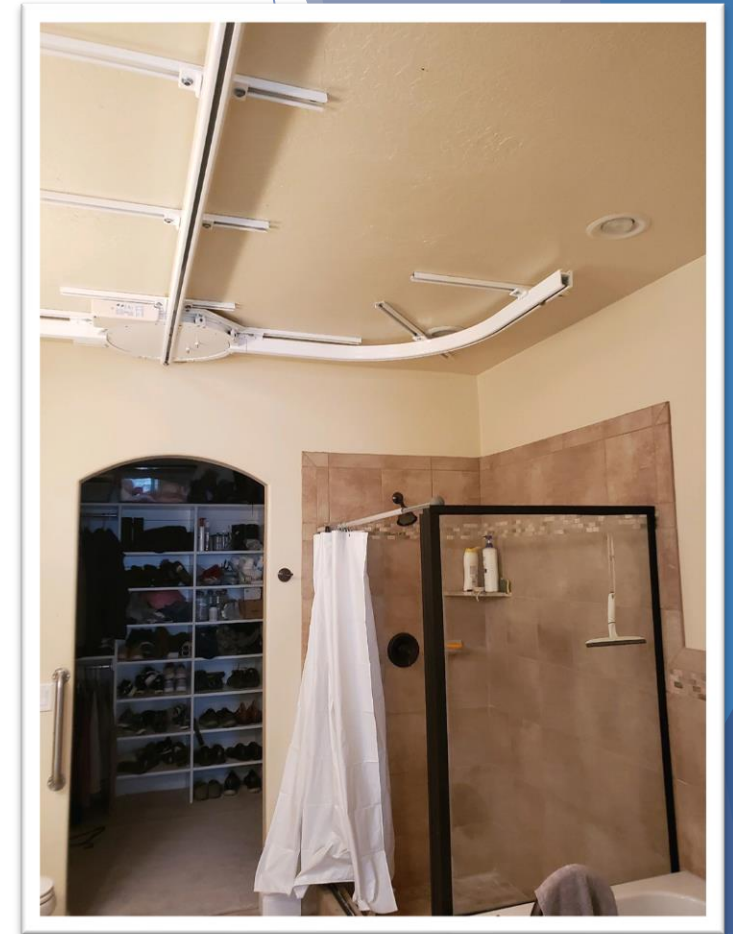
## Solution:



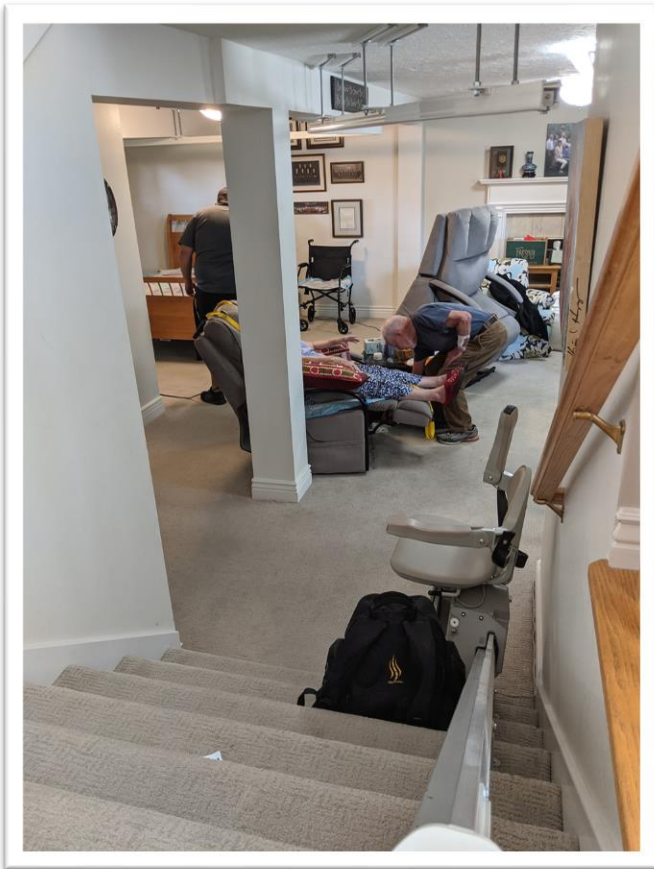
Door header raised; track run through



Turntable brings user over toilet OR into shower

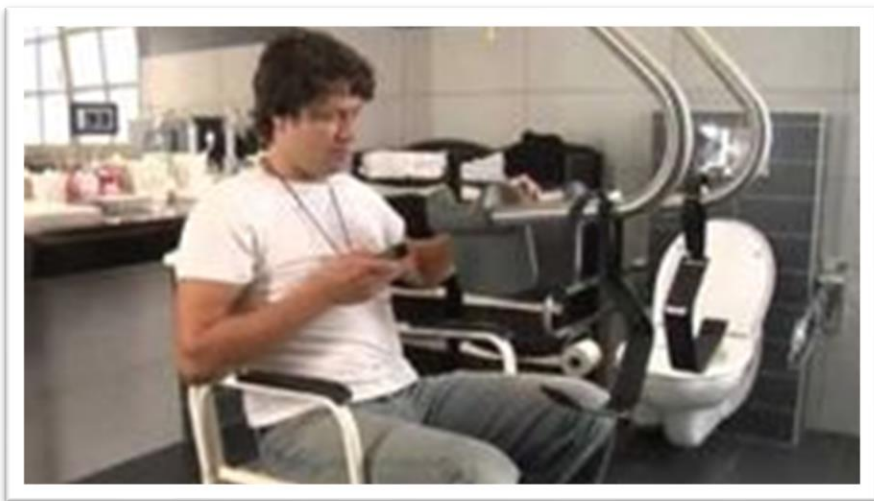
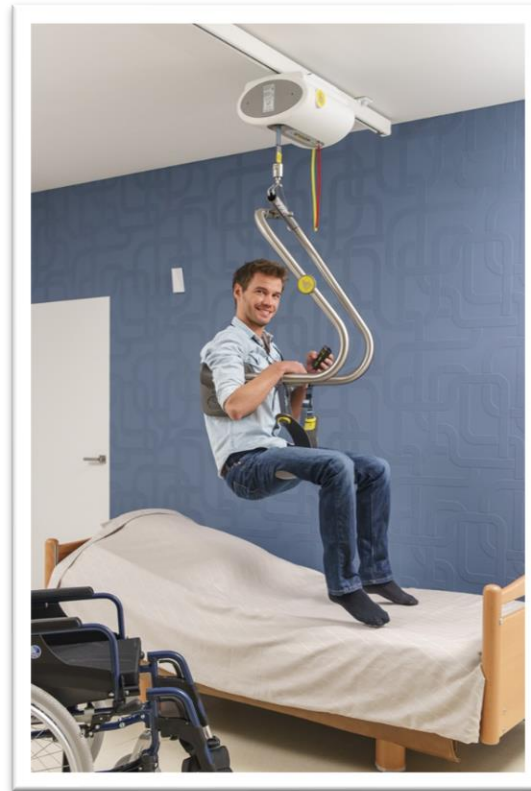


Track curves to position user in shower



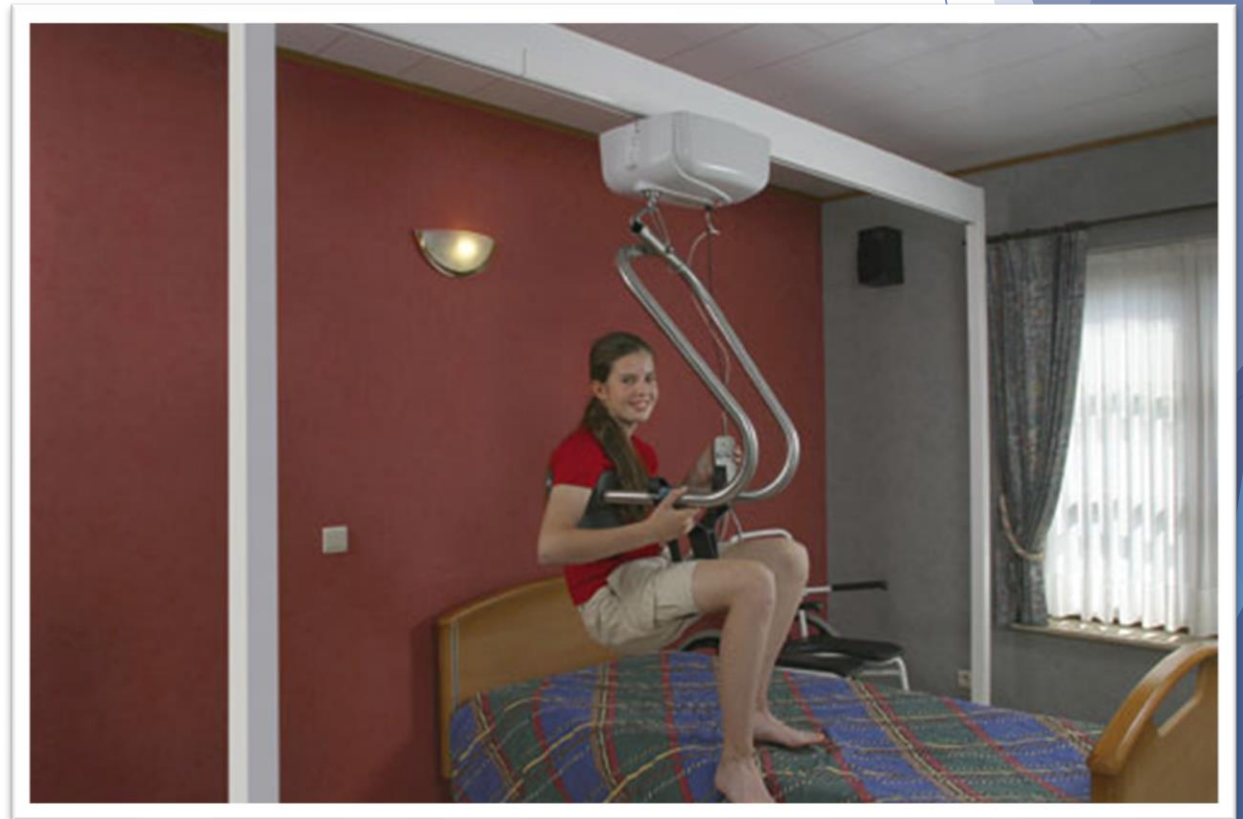
***Combining several solutions in one room: Stair lift to basement adapted for accessibility. Track throughout (to chair, bed, bathroom)***

# Transfer Solutions



**Rental options available  
for mobile lifts**

# Freedom Bridge



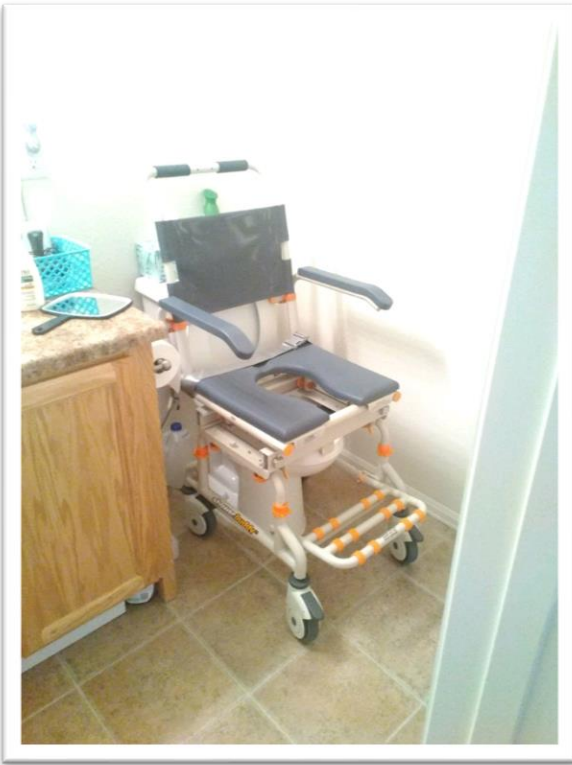


**ShowerBuddy**

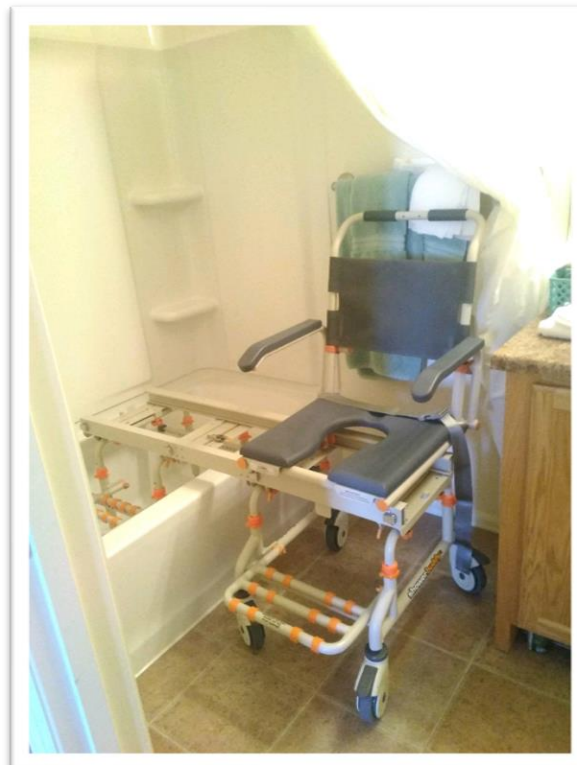


**TubBuddy**  
*(with tilt)*

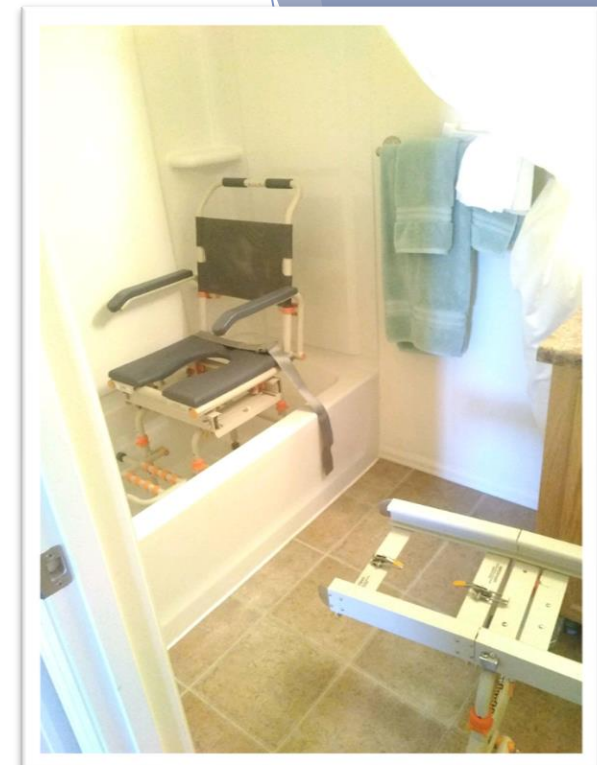




Over the toilet.  
Patient avoids  
transfers



Line up with  
bridge into tub



Slide seat, lock  
into place  
remove bridge



# **ACCESSIBLE** **SYSTEMS**

*Independence for Life*

**Serving Northern Colorado and Wyoming**  
**970-475-1880**




Colorado Home Modification



# TAX CREDIT

**NEED YOUR HOME TO ADAPT TO YOU?**

 *Grab bars, a ramp or wider doorways are just some examples of home modifications that could **save you \$5000** on your Colorado taxes.*

---

***TO TAKE ADVANTAGE OF THE HOME MODIFICATION TAX CREDIT, YOU MUST:***

---

- Have an **illness, impairment or disability** that requires the requested home modification;
- Be a state income taxpayer with an adjusted family **income at or below \$150,000** for the 2019 income tax year.
- Anticipate owing more in state income taxes over the next five years than the value of the work or \$5,000, whichever is less.
- The credit is available for retrofits completed in the tax years 2019 through 2023.

For more information and to see if you qualify, visit:  
<https://www.colorado.gov/pacific/dola/home-modification-tax-credit>



To learn more, call  
**303-864-8425**

---

*A qualified family member that lives  
with you may also be eligible!*